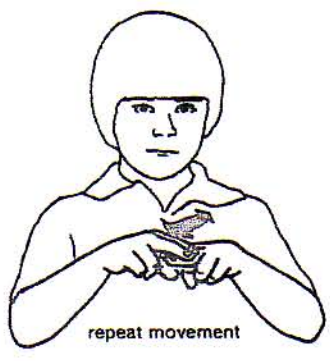


Our time™ Away We Go!



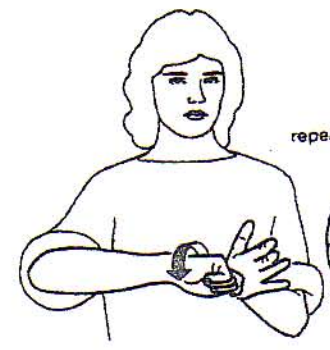
repeat movement

TRAIN



repeat

CAR



repeat movement

KEYS

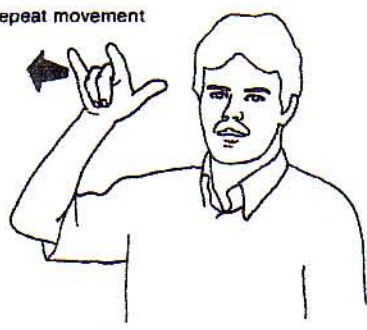


HORSE

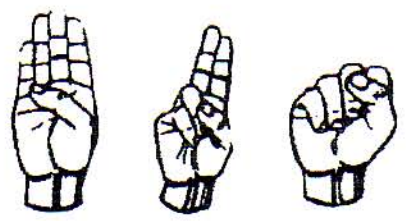


BOAT

repeat movement



AIRPLANE



Bus is commonly signed by spelling out the individual letters in the word

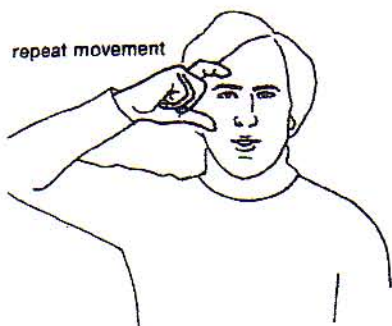
BUS



RIVER

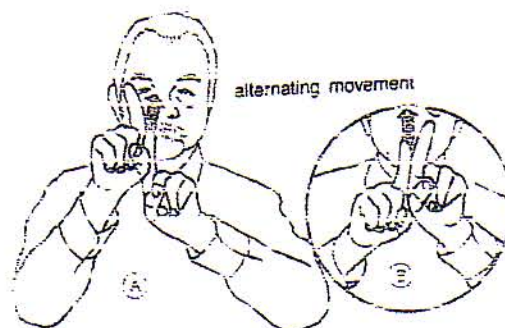


RED



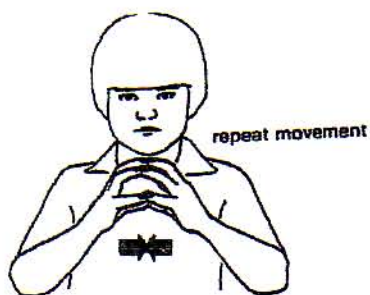
repeat movement

MOON



alternating movement

STARS



repeat movement

BALL

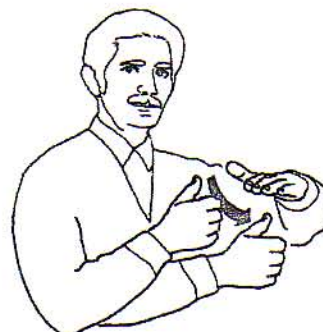


repeat movement

MIRROR



OVER



UNDER